

# BELLA FIGURA

## Tupelo Lamp

TL237

Collection Name

**HALCYON COLLECTION**

The Tupelo tree towers above all, an ancient sentinel keeping its silent vigil at the waters edge and proudly displaying its cragged and banded bark. Our Tupelo table lamp is garbed in a coat of chiselled groves which echo the bark of these monumental trees

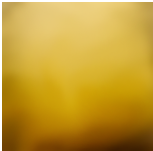
**Finish note** as these lamps are handmade by our artisans in England, they may vary slightly from piece to piece in dimension and appearance.



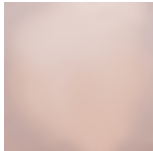
TL237 in Ocean Blue and Brushed Nickel with a 12" Tall Drum Shade in Crepe Satin 1806W/0312 Mist

### Available Finishes

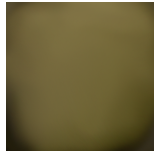
#### Glass colours



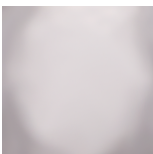
Halcyon Amber



Halcyon Blush  
Pink



Halcyon Bronze



Halcyon Clear



Halcyon Ocean  
Blue

#### Metal Finishes



Antique  
Brushed Brass



Brushed Gold

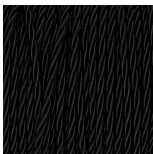


Brushed Nickel

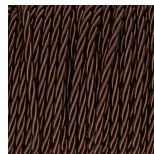
#### Recommended Shades

12 inch Tall Drum

#### Silk Flex Choice, Switch & Plug Colours



Black



Brown



Cream



Silver

## Available Sizes

---

### One size only

TL237,

Height: 45 cm (17.72")

Diameter: 17 cm (6.69")

Bulbs: 1 x 40W E27

Net Weight: 4 kg / 9 lb

Dimensions are measured from the base of the lamp to the middle of the bulb holder and are excluding shade  
The overall height with a 12" tall drum shade 70cm - 27.5"

Finish note: As these glass lamps are handmade by our artisans in England, they may vary slightly from piece to piece in dimension and appearance