

BELLA FIGURA

Tupelo Lamp

TL237

Collection Name

HALCYON COLLECTION

The Tupelo tree towers above all, an ancient sentinel keeping its silent vigil at the waters edge and proudly displaying its cragged and banded bark. Our Tupelo table lamp is garbed in a coat of chiselled grooves which echo the bark of these monumental trees

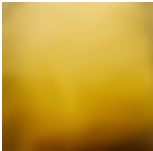
Finish note as these lamps are handmade by our artisans in England, they may vary slightly from piece to piece in dimension and appearance.



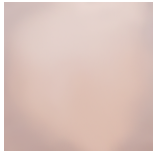
TL237 in Amber Glass and Brushed Gold with a 12" Tall Drum Shade in Crepe Satin 1806W/70 Ochre

Available Finishes

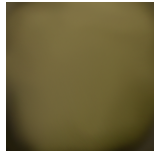
Glass colours



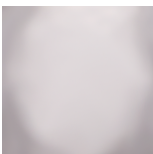
Halcyon Amber



Halcyon Blush
Pink



Halcyon Bronze



Halcyon Clear



Halcyon Ocean
Blue

Metal Finishes



Antique
Brushed Brass



Brushed Gold

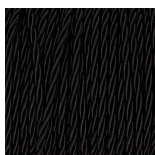


Brushed Nickel

Recommended Shades

12 inch Tall Drum

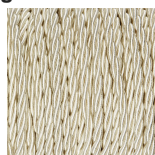
Silk Flex Choice, Switch & Plug Colours



Black



Brown



Cream



Silver

Available Sizes

One size only

TL237,

Height: 45 cm (17.72")

Diameter: 17 cm (6.69")

Bulbs: 1 × 40W E27

Net Weight: 4 kg / 9 lb

Dimensions are measured from the base of the lamp to the middle of the bulb holder and are excluding shade

The overall height with a 12" tall drum shade 70cm - 27.5"

Finish note: As these glass lamps are handmade by our artisans in England, they may vary slightly from piece to piece in dimension and appearance