

BELLA FIGURA

Montague Lamp

TL292

Collection Name

ART DECO COLLECTION

An extremely elegant new table lamp with a large central column of cast & polished Lucite, which has been cut in two and is divided by a slim brass plate in a choice of metal finishes. This creates an lovely optical illusion through the column as the angle of view changes. This is a very contemporary table lamp with a hint of Art Deco inspiration.

Test Certification

IEC (International Electrotechnical Commission) test certificates available - will incur a surcharge
UL (Underwriters Laboratories) test certificates available for the USA - will incur a surcharge
Suitable for Yachts - Rod and bolting available for use on yachts

Compatible with



Yacht Club



TL292 in Bronze and Clear Lucite with a 15 Inch Drum Shade in Silk Crepe Satin
1806W/ 216 Pebble

Available Finishes

Lucite Colours



Clear Lucite Rods



Frosted Lucite Rods

Metal Finishes



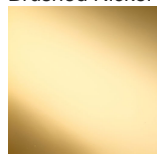
Brushed Nickel



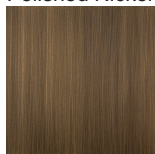
Polished Nickel



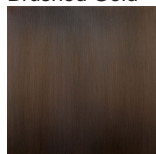
Brushed Gold



Polished Gold

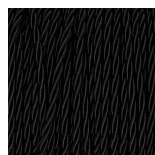


Antique
Brushed Brass

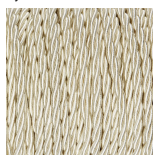


Bronze

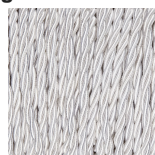
Silk Flex Choice, Switch & Plug Colours



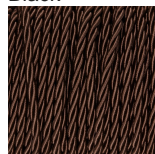
Black



Cream



Silver



Brown

Available Sizes

One Size Only

TL292,

Height: 54 cm (21.26")

Diameter: 12.5 cm (4.92")

Bulbs: 1 x 40W E27

Net Weight: 5 kg / 11 lb

Dimensions are measured from the base of the lamp to the middle of the bulb holder and are excluding shade.

Overall height with a 15" drum shade 74cm - 29.1"

Shades can also be made with Customer Own Material (COM)