

# BELLA FIGURA

## Ashton Lamp

**TL200**

Collection Name

**STONE COLLECTION**

An elegant rectangular table lamp made out of satin finished marble with decorative strips of brass inserted into the stone on three sides. This new table lamp is slightly retro and yet very contemporary and stylish.

### Test Certification

IEC (International Electrotechnical Commission) test certificates available - will incur a surcharge  
UL (Underwriters Laboratories) test certificates available for the USA - will incur a surcharge  
Suitable for Yachts - Rod and bolting available for use on yachts

### Compatible with



Yacht Club



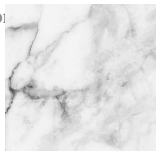
TL200 in Cream Satin Marble and Bronze with a 15 Inch Straight Oval Shade in Silk Crepe Satin 1806W/ 1012 Dust

### Available Finishes

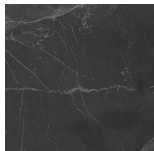
#### Marble colours



Satin Crema  
Marfil (Cream)



Satin  
Arabescato  
(White)



Satin Nero  
Marquina  
(Black)

#### Metal Finishes



Brushed Gold



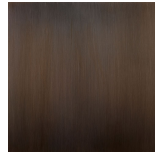
Brushed Nickel



Polished Gold

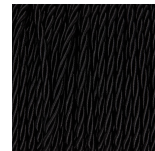


Polished  
Nickel



Bronze

#### Silk Flex Choice, Switch & Plug Colours



Black



Cream



Silver



Brown

## Available Sizes

---

### One Size Only

TL200,

Height: 46 cm (18.11")

Width: 14 cm (5.51")

Depth: 8.5 cm (3.35")

Bulbs: 1 x 40w E27

Net Weight: 8 kg / 18 lb

Dimensions are measured from the base of the lamp to the middle of the bulb holder and are excluding shade.

Shades are also available in Customer Own Material (COM)

Overall height with a 15" straight oval shade 69cm - 27.2"