

BELLA FIGURA

Tesoro Tall Chandelier

CL645-T

Collection Name

MODERN MURANO COLLECTION

A stunning ceiling light with a metal frame and strings of hand-made, irregular Murano glass drops in a variety of colour combinations. The G9 bulbs are fitted inside custom-made glass covers with a satin finish, which give a beautifully soft light. This version of the Tesoro chandelier comes in two sizes and is ideal for atriums and double height hallways.

Test Certification

IEC (International Electrotechnical Commission) test certificates available - will incur a surcharge
UL (Underwriters Laboratories) test certificates available for the USA - will incur a surcharge



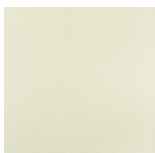
CL645-T-95 in Clear and Amber Murano Glass and Gold Leaf

Available Finishes

Metal Finishes



Gold Leaf



Pearl



Silver Leaf

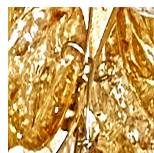
Murano Glass Colours



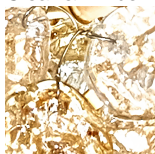
Clear & Amber



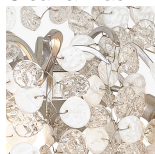
Clear & Black



Tesoro Amber



Tesoro Clear



White & Clear

Available Sizes

Size One

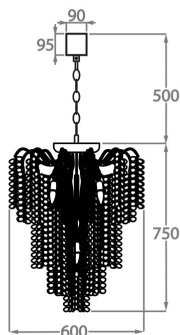
CL645-T-60,

Height: 75 cm (29.53")

Diameter: 60 cm (23.62")

Bulbs: 12 x 25w or 4w G9

Net Weight: 15 kg / 33 lb



Size Two

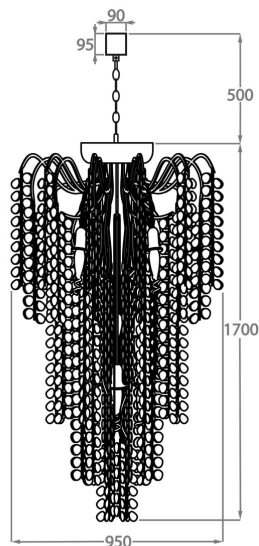
CL645-T-95,

Height: 170 cm (66.93")

Diameter: 95 cm (37.4")

Bulbs: 35 x 25w or 4w G9

Net Weight: 90 kg / 198 lb



The dimensions of the central rod/chain and ceiling rose are not included in the height measurements

Standard rod/chain and ceiling rose is 50cm if not otherwise specified by customer

Please note the hand finished nature of the 'leafing' process means the end result is a raw and organic looking finish - highlighting the unique, 'made to order' qualities of our artisan crafted product.