

BELLA FIGURA

Sol Chandelier

CL804

Collection Name
VEGA COLLECTION

Humans have long illustrated the sun with a simplified image of a central circle surrounded by lines as rays which frame it. Sol, which takes its name from a sun god, plays on this universally recognised symbol for the Sun with arms that project out from a central point, each ending with a piece of hand-blown flared glass. A simple but joyful piece especially designed to suit those with low ceilings.

Compatible with



Bathroom



CL804-100 in Satin Glass and Antique Brushed Brass

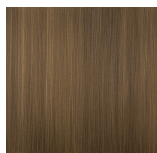
Available Finishes

Glass colours



Satin

Metal Finishes



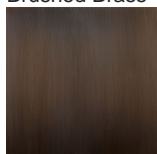
Antique
Brushed Brass



Brushed Gold



Brushed Nickel



Bronze

Available Sizes

Size One

CL804-75,
Height: 8.6 cm (3.39")
Diameter: 75 cm (29.53")
Bulbs: 9 × 2.5W G9 LED

Size Two

CL804-100,
Height: 8.6 cm (3.39")
Diameter: 100 cm (39.37")
Bulbs: 12 × 2.5W G9 LED
Net Weight: 10 kg / 22 lb

Size Three

CL804-125,
Height: 8.6 cm (3.39")
Diameter: 125 cm (49.21")
Bulbs: 15 × 2.5W G9 LED