

BELLA FIGURA

Rime Pendant

CL52

Collection Name

CANTERBURY COLLECTION

A classic pendant light with an artfully fractured edge and the crackled appearance of frozen ice, which encases the hand-blown glass beneath. Once lit, the refraction of light creates some truly exquisite patterns, which are unique to each pendant.



CL52 in Clear Crackled Glass on a Polished Gold Rod

Available Finishes

Glass colours



Clear Crackled

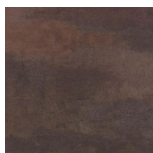
Metal Finishes



Polished
Nickel



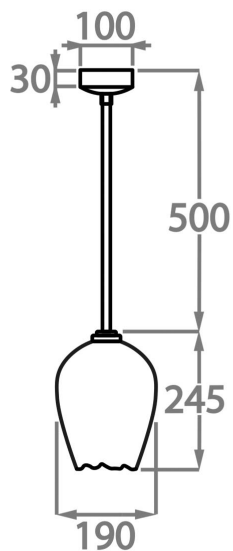
Polished Gold



Old English
Brass

Available Sizes

Large
CL52-LA,
Height: 24.5 cm (9.65")
Diameter: 19 cm (7.48")
Bulbs: 1 x 40W E12
Net Weight: 3 kg / 7 lb



This pendant is supplied as standard with 50cm (20") of chain. More chain is available on request

Please note these pendant's are a unique design and therefore each pendant varies slightly in design and size from one another