

BELLA FIGURA

Rene Chandelier

CL214-125

Collection Name

MOONLIGHT COLLECTION

A look at Art Deco design would be incomplete without considering the work of René Lalique, but his superb glass art could not escape our notice. The René chandelier is our response to the floral motifs and satinised surface seen on several of his iconic sculptures. The stylised leaf impressions are suspended on a slim oval frame which makes it the ideal feature for dining areas.

Compatible with



Bathroom



CL214-125 in Satin Glass and Brushed Light Bronze

Available Finishes

Glass colours

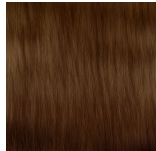


Rene Satin

Metal Finishes



Brushed Gold



Brushed Light
Bronze



Brushed Nickel

Available Sizes

One Size Only

CL214-125,

Height: 42 cm (16.54")

Length: 125 cm (49.21")

Depth: 63 cm (24.8")

Bulbs: 12 G9 LED

Net Weight: 40 kg / 88 lb

