

# BELLA FIGURA

## Pyrus Lamp

TL162

Collection Name

**CONTOUR COLLECTION**

The fruit from the tree of the Pyrus genus – the humble pear, the perfect name for our latest ceramic design. Curvaceous but sleek, our Pyrus lamp renews this classic pear shape, creating a chic outline for superior interior styling. Illuminated by five new glossy glazes, this piece is as versatile as it is vivacious.



TL162 in Blush Pink and Polished Brass with 13" Tall Drum Shade in Silk Linen  
3998/W White

### Available Finishes

#### Ceramic Colours



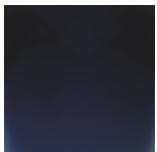
Blush Pink



Citrus Yellow

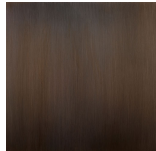


Pebble Grey



Royal Blue

#### Neck and Bulb Holder



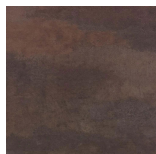
Bronze



Polished Brass

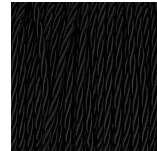


Polished  
Nickel



Old English  
Brass

#### Silk Flex Choice, Switch & Plug Colours



Black



Brown



Cream



Silver

## Available Sizes

---

### One Size

TL162,

Height: 52.5 cm (20.67")

Diameter: 28 cm (11.02")

Bulbs: 1 E27

Net Weight: 3 kg / 7 lb

Dimensions are measured from the base of the lamp to the middle of the bulb holder and are excluding shade

Overall height with a 13" Tall Drum shade 83cm - 32.2"

Shades are also available in Customer Own Material (COM)