

# BELLA FIGURA

## Milne Wall Light

**WL50**

Collection Name

**CANTERBURY COLLECTION**

The perfect pairing for our Milne Chandelier, the wall light is a simple but elegant metal band in which sits a long, curved shade which is available in over 280 shade silks. The metal band is available in four hand painted finishes and the choice of two metal textures - smooth or hammered.



WL50 in Hammered Antique Silver with a Half Oval Shade in Crepe Satin 1806/W 68 Peach

### Available Finishes

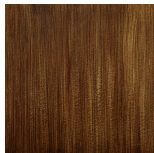
#### Metal Finishes



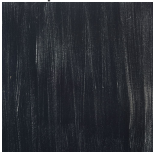
Antique Gold



Antique Silver



Decorated Bronze



Lead

#### Metal Texture

Hammered

Smooth

#### Recommended Shades

Long Half Oval

## Available Sizes

---

### One Size

WL50,

Height: 39 cm (15.35")

Diameter: 22 cm (8.66")

Bulbs: 4 x 2.5 G9 LED

Net Weight: 2 kg / 5 lb

\*Please note the above measurements are including shade; the overall height of the metal frame not including the shade is 6cm - 2"  
Overall diameter of the 1/2 oval shade 18cm - 7"