

BELLA FIGURA

Mela Lamp

TL163

Collection Name

CONTOUR COLLECTION

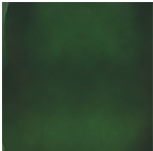
The Mela lamp, which takes its name from the Italian word for 'apple', is a rejuvenation of our classic and ever popular Montedoro lamp with six new finishes to adorn its voluptuous form. This creation is truly the apple of our eye.



TL163 in Citrus Yellow and Polished Brass with 16" Melton Shade in Silk Crepe Satin 1806W/ 57N New Navy

Available Finishes

Ceramic Colours



Ivy Green



Parchment



Blush Pink



Citrus Yellow

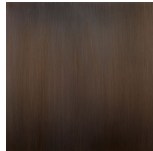


Pebble Grey



Royal Blue

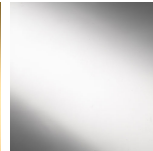
Neck and Bulb Holder



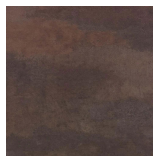
Bronze



Polished Brass

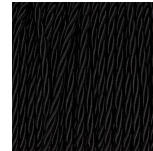


Polished Nickel

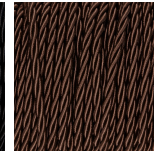


Old English Brass

Silk Flex Choice, Switch & Plug Colours



Black



Brown



Cream



Silver

Available Sizes

One Size

TL163,

Height: 46 cm (18.11")

Diameter: 27 cm (10.63")

Bulbs: 1 x 40 E27

Net Weight: 3 kg / 7 lb

Dimensions are measured from the base of the lamp to the middle of the bulb holder and are excluding shade

Overall height with a 16" Melton Shade or 16" Drum Shade 69cm - 27.2"

Shades are also available in Customer Own Material (COM)