

BELLA FIGURA

Lyra Chandelier

CL802

Collection Name
VEGA COLLECTION

Lyra is the constellation that hosts the star Vega from which our collection gets its name. This chandelier exudes feminine appeal with glass petals fashioned into shapes reminiscent of an ancient lyre, a stringed instrument known in Latin as 'Lyra'.

Compatible with



Bathroom



CL802 in Satin & Polished Gold

Available Finishes

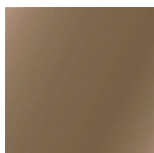
Glass colours



Clear

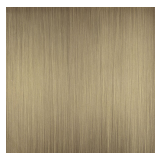


Satin



Smoke

Metal Finishes



Brushed Dark
Bronze



Brushed Gold



Brushed Nickel

Available Sizes

Size One

CL802-75,
Height: 39.5 cm (15.55")
Diameter: 75 cm (29.53")
Bulbs: 6 × 2.5W G9 LED
Net Weight: 30 kg / 66 lb

Size Two

CL802-100,
Height: 52 cm (20.47")
Diameter: 100 cm (39.37")
Bulbs: 10 × 2.5W G9 LED
Net Weight: 45 kg / 99 lb

Size Three

CL802-125,
Height: 70 cm (27.56")
Diameter: 125 cm (49.21")
Bulbs: 16 × 2.5W G9 LED
Net Weight: 70 kg / 154 lb