

BELLA FIGURA

Herschel Chandelier

CL805

Collection Name

VEGA COLLECTION

The Herschel series pays homage to British astronomer, Sir William Herschel who is credited with the discovery of Uranus and its two moons during his many studies of the heavens. This sleek triple pendant is beautifully complemented by its wall light counterpart; the parred back detailing of this series lets the effortless charm of the alabaster shades do all the talking.

Compatible with



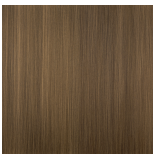
Bathroom



CL805 in Alabaster and Bronze

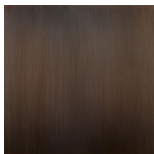
Available Finishes

Metal Finishes



Antique

Brushed Brass

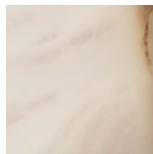


Bronze



Brushed Gold

Stone



Alabaster



Brushed Nickel

Available Sizes

Size One

CL805,

Height: 33 cm (12.99")

Width: 148 cm (58.27")

Depth: 19 cm (7.48")

Bulbs: 12 x 2.5W G9 LED

Net Weight: 28 kg / 62 lb

Please note that due to the nature of alabaster, some dark veins may be present in the stone.