

# BELLA FIGURA

## Halley Table Lamp

**TL820**

Collection Name

**VEGA COLLECTION**

The Halley table lamp is a stylised impression of the most famous comet to grace our skies, Halley's comet. This comet is a rare thing to behold but with a famous reputation for its everlasting presence. To honour 'Halley' honestly was to create a design that would stand the test of time, something that answers to both traditional and modern tastes in one and is in effect timeless.

**Compatible with**



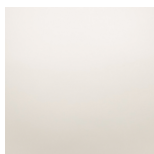
Yacht Club



TL820 in Chalk and Polished Brass with 14" Tall Drum Shade in James Hare 31625-10 Vyne French Grey

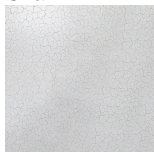
### Available Finishes

#### Ceramic Colours



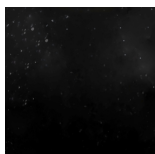
Dolomite

Chalk

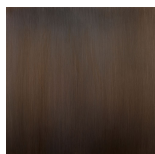


Crackle

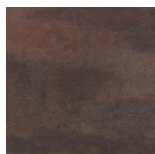
#### Neck and Bulb Holder



Oil



Bronze



Old English  
Brass



Polished Brass



Polished  
Nickel

## Available Sizes

---

### Size One

TL820,

Height: 50.3 cm (19.8")

Width: 28 cm (11.02")

Depth: 28 cm (11.02")

Bulbs: 1 x 40W E27

Dimensions are measured from the base of the lamp to the middle of the bulb holder and are excluding shade.