

# BELLA FIGURA

## Fornax Lamp

TL165E

Collection Name

**CONTOUR COLLECTION**

At scorching hot temperatures, the individually hand sculpted clay body is removed from the kiln and plunged into a vessel of combustibles; igniting flames which lick the surface of the lamp base and paint a smoky landscape on the outside. Throwing back to the ancient Japanese 'Raku' process, but made here in the UK, our Fornax table lamp is a true beauty, created where art meets science. These alluring table lamps are available in three unique finishes; Cinder, Desert and Burnt Sienna.

**Please note** the intricate patterns on the surface of the Fornax range are created entirely organically from smoke and fire and will therefore vary slightly from piece to piece.

**Compatible with**



Express



TL165 in Burnt Sienna and a 15" Short Drum Shade

### Available Finishes

#### Ceramic Colours



Burnt Sienna

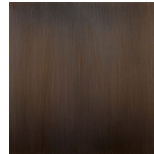
#### Metal Finishes



Polished Brass



Polished Nickel

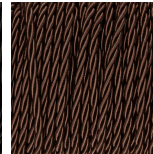


Bronze

#### Silk Flex Choice, Switch & Plug Colours



Black



Brown



Silver

## Available Sizes

---

### One Size

TL165,

Height: 29.6 cm (11.65")

Diameter: 30 cm (11.81")

Bulbs: 1 x 40 E27

Dimensions are measured from the base of the lamp to the middle of the bulb holder and are excluding shade.

Overall height with a 15" Short Drum Shade 52.5cm - 20.6"

Notes: This design is individually crafted and therefore will vary slightly from piece to piece. The dimensions for this design above are an approximate due to this product being hand made.

Shades are also available in Customer Own Material (COM)