

# BELLA FIGURA

## Eyre Lamp

TL235

Collection Name

**HALCYON COLLECTION**

Indigenously known as Kati-Thanda, Lake Eyre is usually cinder dry, the lakebed blanketed by a patchwork of tessellating salt segments, as reflected by the scalloped surface of our Eyre table lamp. Of the 5 new colourways, Blush Pink is of particular note - an emulation of the natural phenomenon which takes place when the lake is flooded, bringing a flourish of salt-loving algae and halobacterium who turn the waters a brilliant pink.

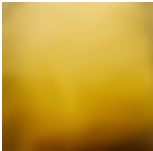
**Finish note** as these lamps are handmade by our artisans in England, they may vary slightly from piece to piece in dimension and appearance.



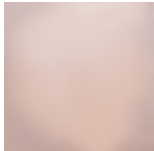
TL235 in Ocean Blue Glass and Brushed Nickel with an 11" Tall Drum Shade in Crepe Satin 1806W/403 Lilac Grey

### Available Finishes

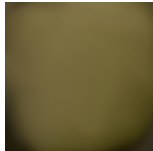
#### Glass colours



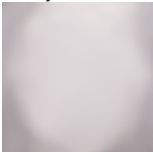
Halcyon Amber



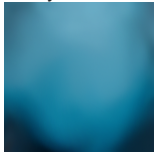
Halcyon Blush Pink



Halcyon Bronze



Halcyon Clear



Halcyon Ocean Blue

#### Neck and Bulb Holder



Brushed Brass

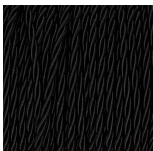


Brushed Nickel

#### Recommended Shades

11 inch Tall Drum

#### Silk Flex Choice, Switch & Plug Colours



Black



Brown



Cream



Silver

## Available Sizes

---

### One size only

TL235,

Height: 37.5 cm (14.76")

Width: 20.5 cm (8.07")

Depth: 16.5 cm (6.5")

Bulbs: 1 E26

Net Weight: 4 kg / 9 lb

Dimensions are measured from the base of the lamp to the middle of the bulb holder and are excluding shade

The overall height with a 11" tall drum shade 62cm - 24.5"

Finish note: As these glass lamps are handmade by our artisans in England, they may vary slightly from piece to piece in dimension and appearance