

BELLA FIGURA

Concertina Chandelier

CL114

Collection Name

MAYFAIR COLLECTION

Our Concertina chandelier, is a contemporary piece inspired by brutalist designs from the 1970s and is available in a new distressed bronze finish. This design is made out of a series of random brass v-shaped strips, which are welded together to produce a unique piece of modern ceiling sculpture with a subtle lighting effect. The chandelier is finished off with a frosted Lucite bottom diffuser and a central finial

Test Certification

IEC (International Electrotechnical Commission) test certificates available - will incur a surcharge
UL (Underwriters Laboratories) test certificates available for the USA - will incur a surcharge

Compatible with



Bathroom



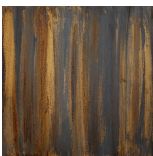
Yacht Club



CL114-100 in Distressed Bronze with a Lucite Diffuser

Available Finishes

Metal Finishes

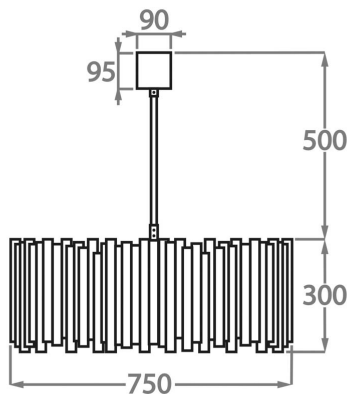


Distressed Bronze

Available Sizes

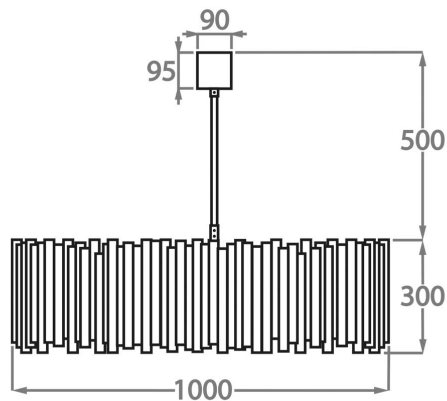
Size One

CL114-75,
Height: 30 cm (11.81")
Diameter: 75 cm (29.53")
Bulbs: 6 × 40W E27
Net Weight: 17 kg / 37 lb



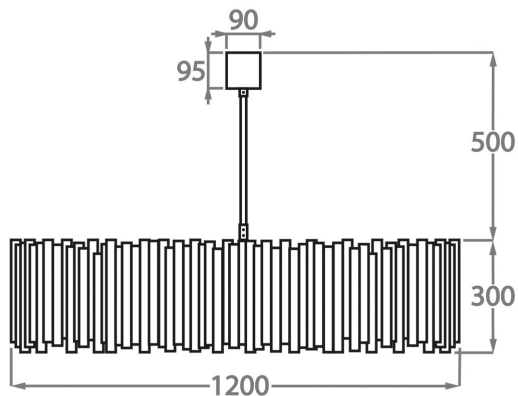
Size Two

CL114-100,
Height: 30 cm (11.81")
Diameter: 100 cm (39.37")
Bulbs: 8 × 40W E27
Net Weight: 26 kg / 58 lb



Size Three

CL114-120,
Height: 30 cm (11.81")
Diameter: 120 cm (47.24")
Bulbs: 8 × 40W E27
Net Weight: 34 kg / 75 lb



The dimensions of the central supporting rod and ceiling rose are not included in the height measurements.
The standard rod and ceiling rose is 50cm (20") high if not otherwise specified by the customer.

*Please note that as the metal is hand-finished, no two distressed finishes will be exactly the same