

BELLA FIGURA

Savile Row Rectangular Chandelier

CL125-RECT

Collection Name
MAYFAIR COLLECTION

Our new Rectangular Savile Row chandelier is one of the latest addition to our growing Mayfair collection. It has a large rectangular frame with hand-carved lucite tiles in two-tier and comes complete with a frosted bottom diffuser supported by two cross struts

Test Certification

IEC (International Electrotechnical Commission) test certificates available - will incur a surcharge
UL (Underwriters Laboratories) test certificates available for the USA - will incur a surcharge



CL125-RECT-150 in Hand-carved Lucite and Brushed Dark Bronze

Available Finishes

Lucite Colours



Clear Hand-Carved Lucite

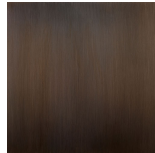
Metal Finishes



Polished Gold



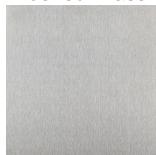
Antique
Brushed Brass



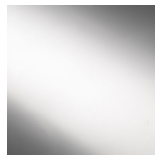
Bronze



Brushed Gold



Brushed Nickel



Polished
Nickel

Available Sizes

Size One

CL125-RECT-150,

Height: 20 cm (7.87")

Width: 35 cm (13.78")

Diameter: 150 cm (59.06")

Bulbs: 12 x 25W G9 or 4W LED

G9 Net Weight: 26 kg / 58 lb

The dimensions of the central supporting rod and ceiling rose are not included in the height measurements

The standard rod and ceiling rose is 50cm (20") high if not otherwise specified by the customer

This design can be made in custom sizes

Please Note: Our Chandeliers are not supplied with ceiling hooks. The ceiling rose, chain and rod specification will differ dependant on the weight of the chandelier. A qualified electrician must assess your ceiling structure and advise on the right fitting.