

# BELLA FIGURA

## Brandt Floor Lamp

**FL209**

Collection Name

**MOONLIGHT COLLECTION**

The Brandt series throws us back into the Art Deco era with a sleek and confident design inspired by one of the most accomplished metalsmiths of the time, Edgar Brandt. The sweeping lines of the original motif are made current by simplification, creating this impressive and highly adaptable design, which gleams as the light falls upon its surface. The table lamp and floor lamp in this series are made with a solid glass base, in your choice of a statement Gloss Black or soft, ethereal Satin which echoes the celestial look which runs throughout the *Moonlight* collection.



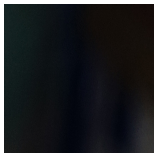
FL209 in Brushed Gold with an 18" Oval Shade in James Hare Midnight 8308/03 Velvet

### Available Finishes

#### Lamp Base



Satin Clear



Gloss Black

#### Metal Finishes



Brushed Gold

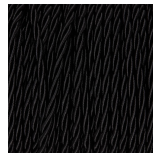


Brushed Nickel



Brushed Dark  
Bronze

#### Silk Flex Choice, Switch & Plug Colours



Black



Cream



Silver



Brown

## Available Sizes

---

### One Size Only

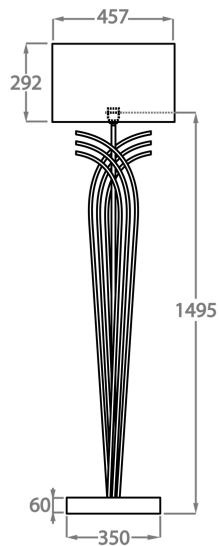
FL209,

Height: 149.5 cm (58.86")

Diameter: 35 cm (13.78")

Bulbs: 1 x 60w E27

Net Weight: 8 kg / 18 lb



Dimensions are measured from the base of the lamp to the middle of the bulb holder and are excluding shade

Shades can also be made with Customer Own Material (COM)

Overall height with an 18" oval shade is 175.5cm