

BELLA FIGURA

Bodice Table Lamp

TL663

Collection Name

MOONLIGHT COLLECTION

The Bodice table lamp is the English Rose of this latest collection; a feminine personality composed of elegance and beauty with an unmistakably graceful demeanour. This table lamp is comprised of a mouth blown body of glass and a solid, spun brass neck, both deftly crafted in the south of England.

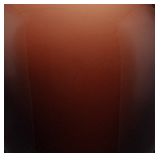
Finish note: This lamp finish is opaque; as these lamps are handmade by our artisans in England, they may vary from piece to piece in dimension and appearance.



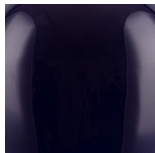
TL663 in Nightwatch and Polished Brass with a 12" Oval Shade in James Hare 8308/02

Available Finishes

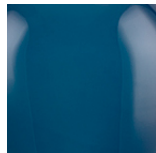
Glass colours



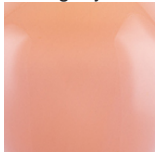
Mahogany



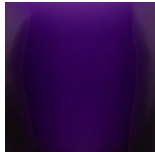
Ink



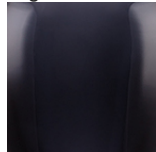
Nightwatch



Ballet



Indigo



Storm

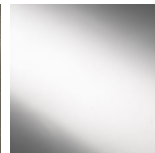
Neck and Bulb Holder



Polished Brass



Pewter

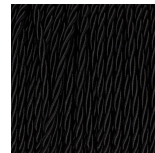


Polished Silver

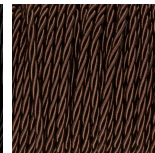


Antique Brass

Silk Flex Choice, Switch & Plug Colours



Black



Brown

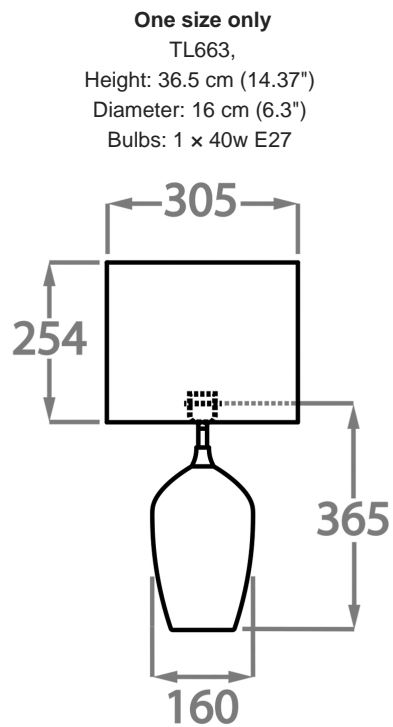


Cream



Silver

Available Sizes



Dimensions are measured from the base of the lamp to the middle of the bulb holder and are excluding shade
The overall height with a 12" oval shade is 57cm

Finish note: As these glass lamps are handmade by our artisans in England, they may vary slightly from piece to piece in dimension and appearance