

BELLA FIGURA

Bodice Table Lamp

TL663

Collection Name

MOONLIGHT COLLECTION

The Bodice table lamp is the English Rose of this latest collection; a feminine personality composed of elegance and beauty with an unmistakably graceful demeanour. This table lamp is comprised of a mouth blown body of glass and a solid, spun brass neck, both deftly crafted in the south of England.

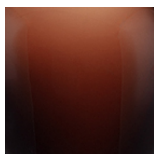
Finish note: This lamp finish is opaque; as these lamps are handmade by our artisans in England, they may vary from piece to piece in dimension and appearance.



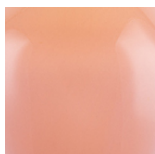
TL663 in Ink Glass and Polished Nickel with a 12" Oval Shade in James Hare
38000/64

Available Finishes

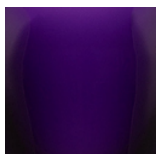
Glass colours



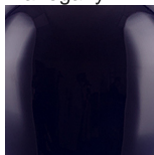
Mahogany



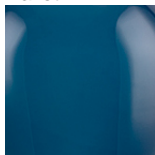
Ballet



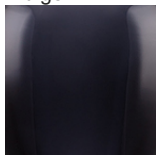
Indigo



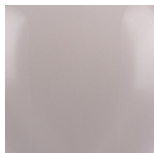
Ink



Nightwatch



Storm



Raincloud

Neck and Bulb Holder



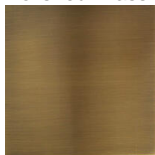
Polished Brass



Pewter

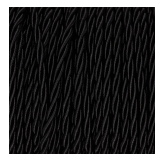


Polished Silver

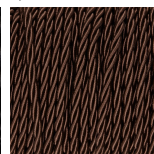


Antique Brass

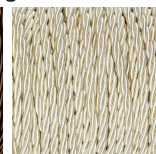
Silk Flex Choice, Switch & Plug Colours



Black



Brown

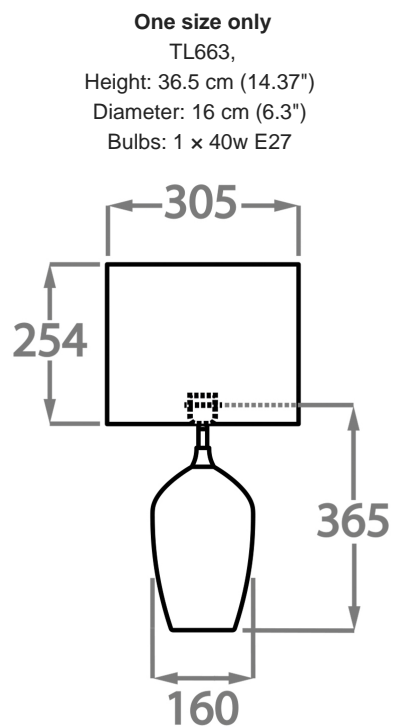


Cream



Silver

Available Sizes



Dimensions are measured from the base of the lamp to the middle of the bulb holder and are excluding shade

Finish note: As these glass lamps are handmade by our artisans in England, they may vary slightly from piece to piece in dimension and appearance