

BELLA FIGURA

Bodice Table Lamp

TL663

Collection Name

MOONLIGHT COLLECTION

The Bodice table lamp is the English Rose of this latest collection; a feminine personality composed of elegance and beauty with an unmistakably graceful demeanour. This table lamp is comprised of a mouth blown body of glass and a solid, spun brass neck, both deftly crafted in the south of England.

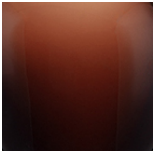
Finish note: This lamp finish is translucent; as these lamps are handmade by our artisans in England, they may vary from piece to piece in dimension and appearance.



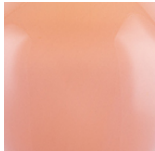
TL663 in Mahogany and Antique Brass with a 12" Oval Shade in James Hare in 38000/118 Snakeskin

Available Finishes

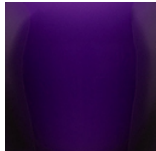
Glass colours



Mahogany



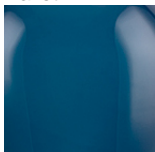
Ballet



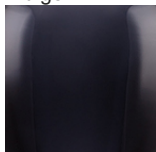
Indigo



Ink



Nightwatch



Storm



Raincloud

Neck and Bulb Holder



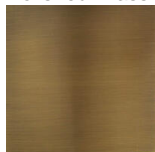
Polished Brass



Pewter

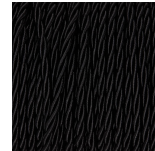


Polished Silver

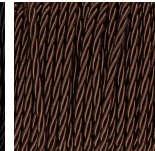


Antique Brass

Silk Flex Choice, Switch & Plug Colours



Black



Brown



Cream



Silver

Available Sizes

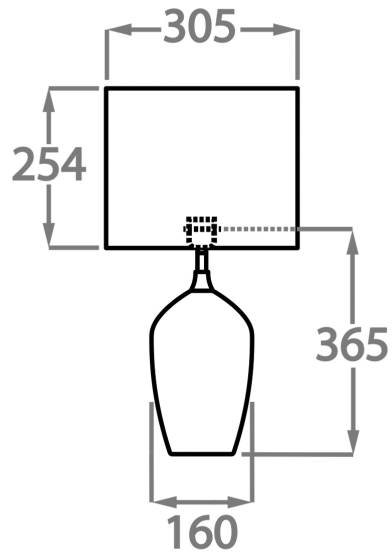
One size only

TL663,

Height: 36.5 cm (14.37")

Diameter: 16 cm (6.3")

Bulbs: 1 x 40w E27



Dimensions are measured from the base of the lamp to the middle of the bulb holder and are excluding shade
The overall height with a 12" oval shade is 57cm

Finish note: As these glass lamps are handmade by our artisans in England, they may vary slightly from piece to piece in dimension and appearance