

# BELLA FIGURA

## Bijou Lamp

TL661-SM

Collection Name

**CONTOUR COLLECTION**

An uncomplicated jewel of utmost sophistication, which will place itself effortlessly within a vast array of settings. The Bijou lamp is a fusion of English blown glass and Italian gilding to create this versatile and feminine gem of distinction.

**Compatible with**



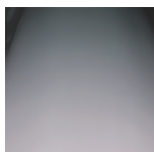
Yacht Club



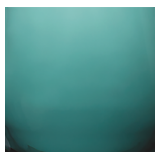
TL661 in Amber Gold Leaf with 9" Tall Drum Shade in Silk Crepe Satin 1806W/ 70 Ochre

### Available Finishes

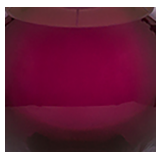
#### Glass colours



Wolf Grey



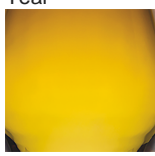
Teal



Heliotrope



Steel Blue



Amber

#### Metal Finishes



Gold Leaf



Silver Leaf

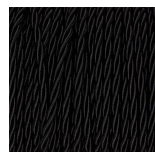


Brushed Gold



Brushed Nickel

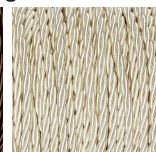
#### Silk Flex Choice, Switch & Plug Colours



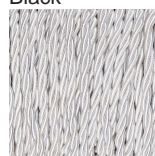
Black



Brown



Cream



Silver

Available Sizes

---

**Size One**

TL661-SM,  
Height: 31 cm (12.2")  
Diameter: 16.5 cm (6.5")  
Bulbs: 1 x 60w E26

**Size Two**

TL661-LA,  
Height: 48 cm (18.9")  
Diameter: 18.5 cm (7.28")  
Bulbs: 1 x 60W E26

TL661-SM: Overall height with a 10" Tall Drum Shade 63cm - 24.8inch  
TL661-LA: Overall height with a 12" Tall Drum Shade 75cm - 30inch