

BELLA FIGURA

Bijou Lamp

TL661-SM

Collection Name

CONTOUR COLLECTION

An uncomplicated jewel of utmost sophistication, which will place itself effortlessly within a vast array of settings. The Bijou lamp is a fusion of English blown glass and Italian gilding to create this versatile and feminine gem of distinction.

Compatible with



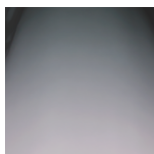
Yacht Club



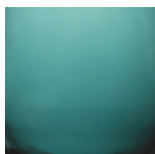
TL661 in Wolf Grey and Brushed Nickel with 10" Tall Drum Shade in Silk Crepe Satin 1806W/ 86 Prussian

Available Finishes

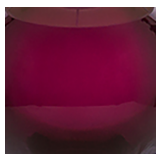
Glass colours



Wolf Grey



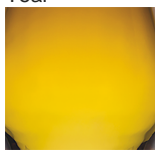
Teal



Heliotrope



Steel Blue



Amber

Metal Finishes



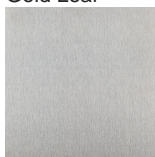
Gold Leaf



Silver Leaf

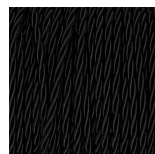


Brushed Gold

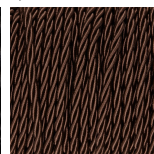


Brushed Nickel

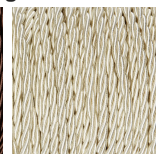
Silk Flex Choice, Switch & Plug Colours



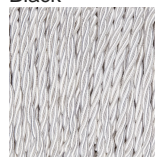
Black



Brown



Cream



Silver

Available Sizes

Size One

TL661-SM,
Height: 31 cm (12.2")
Diameter: 16 cm (6.3")
Bulbs: 1 × 60w E27

Size Two

TL661-LA,
Height: 48 cm (18.9")
Diameter: 18.5 cm (7.28")
Bulbs: 1 × 60W E27

TL661-SM: Overall height with a 10" Tall Drum Shade 63cm - 24.8inch
TL661-LA: Overall height with a 12" Tall Drum Shade 75cm - 30inch