

BELLA FIGURA

Amphora Table Lamp

TL824

Collection Name
VEGA COLLECTION

The Amphora table lamp pays homage to ancient civilisations who bestowed the names of their gods and goddesses on some of the celestial bodies we can witness with the naked eye. The naming of these astronomical discoveries gives them personified characteristics which in turn gave us inspiration for a number of the works included in this collection. An Amphora, chic and strong in silhouette, was often rewarded to victors in contests such as the Panathenaic games, thus the symbol of praise we chose to honour these ancient discoveries.

The Amphora table lamp pays homage to ancient civilisations who bestowed the names of their gods and goddesses on some of the celestial bodies we can witness with the naked eye. The naming of these astronomical discoveries gives them personified characteristics.



TL824 in Dapple Grey and Polished Brass with 13" Tall Drum Shade in James Hare 31625-10 Vyne French Grey

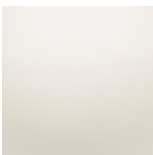
Compatible with



Yacht Club

Available Finishes

Ceramic Colours



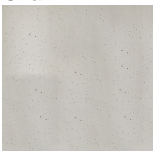
Chalk



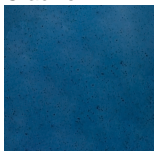
Crackle



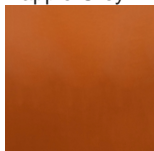
Dapple Grey



Jasper

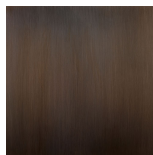


Starry Sky

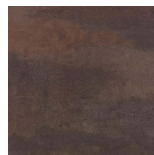


Tabasco

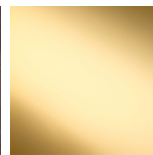
Neck and Bulb Holder



Bronze



Old English
Brass



Polished Brass



Polished
Nickel

Available Sizes

Size One

TL824,

Height: 57.8 cm (22.76")

Diameter: 21.5 cm (8.46")

Bulbs: 1 x 40W E27

Dimensions are measured from the base of the lamp to the middle of the bulb holder and are excluding shade.