

BELLA FIGURA

Acorn Pendant

CL660-PEN

Collection Name

CANTERBURY COLLECTION

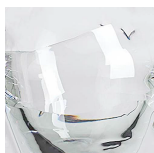
Joining the Acorn family, the new Acorn pendant is a delicate design, each one is wrapped in a generous layer of glass, creating an abstract glass ribbon. Hand-crafted in our glass workshop in Britain, available in clear glass only, with either a rod or flex cord.



CL660-PEN in Clear Glass and a Polished Brass Rod

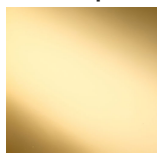
Available Finishes

Glass colours



Acorn Clear

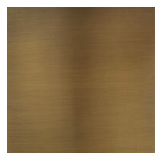
Metal Tops and rod



Polished Brass



Polished
Nickel



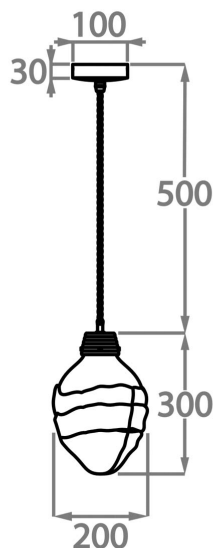
Antique Brass



Pewter

Available Sizes

Large
CL660-PEN,
Height: 30 cm (11.81")
Diameter: 20 cm (7.87")
Bulbs: 1 x 40W E14
Net Weight: 5 kg / 11 lb



This pendant is supplied as standard with 50cm (20") of flex. More flex is available on request.

FINISH NOTE: Please note these pendant's are a unique design and therefore each pendant varies slightly in design and size from one another.